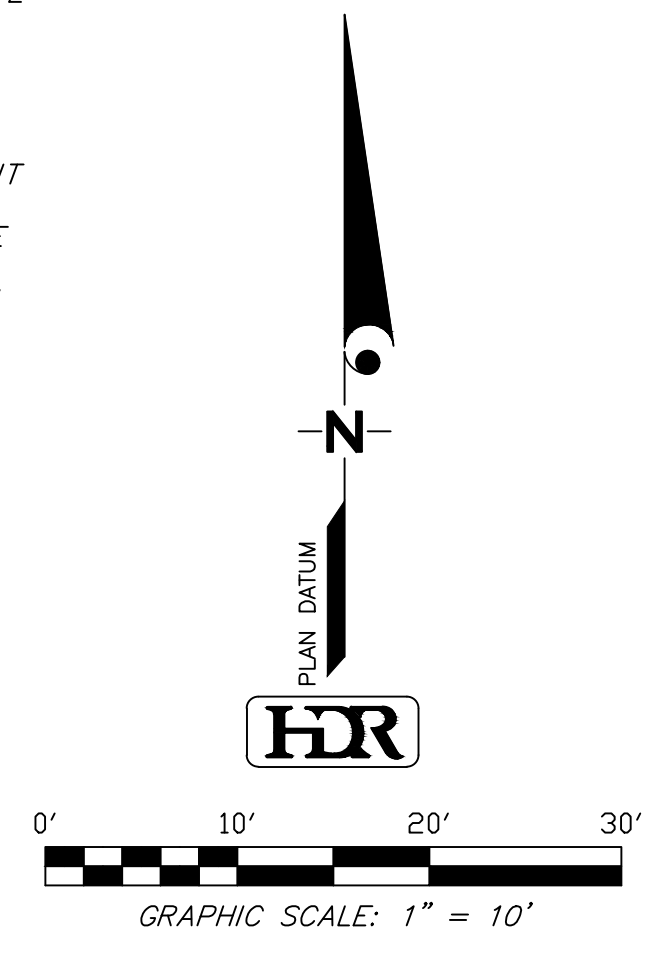


LEGEND

- BM BENCHMARK
- BOLLARD
- BORE HOLE
- CLF CHAIN LINK FENCE
- COA CATCH BASIN
- COMMERCIAL SIGN
- CNF CONCRETE NAIL FOUND
- CMP CORRUGATED METAL PIPE
- CTP CRIMP TOP PIPE
- DOUBLE WING CATCH BASIN
- DHF DRILL HOLE FOUND
- DROP INLET
- DIP DUCTILE IRON PIPE
- ELECTRIC BOX
- ELECTRIC MANHOLE
- FIRE DEPT. CONNECTION
- FIRE HYDRANT
- FLAGPOLE
- FES FLARED END SECTION
- F.K.A. FORMERLY KNOWN AS
- GAS METER
- GAS VALVE
- GUY WIRE
- HANDICAP RAMP
- HEADWALL
- LIGHT POLE
- MAILBOX
- MONITORING WELL
- N/F NOW OR FORMER OWNER
- OTP OPEN TOP PIPE
- OHE OVERHEAD ELECTRIC
- PKF PK NAIL FOUND
- PVC POLY VINYL CHLORIDE PIPE
- POST INDICATOR VALVE
- POWER POLE
- RCP REINFORCED CONCRETE PIPE
- RBF REINFORCING BAR FOUND
- R/W MONUMENT
- SANITARY SEWER CLEANOUT
- SANITARY SEWER MANHOLE
- SINGLE WING CATCH BASIN
- STORM JUNCTION BOX
- TRANSFORMER
- TELEPHONE BOX
- TELEPHONE MANHOLE
- TRAFFIC SIGN
- TRAFFIC SIGNAL BOX
- TRAFFIC SIGNAL POLE
- TREE
- WATER METER
- WATER VALVE
- YARD DRAIN



PREVIOUSLY EXISTING
HUMANITIES BLDG.

ENGLISH CLASSROOM ADDITION

PREVIOUSLY EXISTING
SOCIAL SCIENCES BLDG.

<p>DATE: 02/12/04 JOB NO.: 10068-9047</p>	<p>SCALE: 1" = 10' DESIGNED BY: DH DRAWN BY: BP FILE NO.: 03-1449</p>
<p>STORM AND SANITARY AS-BUILT SURVEY OF ENGLISH CLASSROOM ADDITION SITE AT KENNESAW STATE UNIVERSITY FOR WHITING-TURNER CONSTRUCTION</p>	
<p>LOCATION: CITY OF KENNESAW LAND LOT 97 20TH DISTRICT COBB COUNTY, GEORGIA</p>	
<p>HDR ENGINEERING, INC. 301 PERIMETER CENTER, NORTH SUITE 400 ATLANTA, GEORGIA 30346 678-754-880 ENGINEERS • SURVEYORS • PLANNERS</p>	
<p>DATE: _____ REVISION: _____</p>	<p>DATE: _____ REVISION: _____</p>